



It was in the year 1941 that the idea of a High School Annual of St. Francis High School was put into execution under the name of "The Francian." In that year there was brought forth the first Annual in the history of St. Francis High School. Due to the force of circumstances of time and material, the year 1942 witnessed the absence of the Annual. But in the year 1943 this work was again resumed and with the 1944 Annual we witness the efforts and ambitions of our High School Students.

It is no easy task to edit such a work as an Annual. Those of us who read these pages are acquainted only with the finished product. The time, the efforts, the talents, the fears, the joys—these are all part and parcel of any finished worth-while work.

The purpose of an Annual is to preserve for future times, the more important activities whether scholastic, social or athletic that have developed in the course of the year. This 1944 Annual presents a faithful picture of all such activities as they have been undertaken at St. Francis.

We congratulate the Faculty who sponsored and encouraged the execution of this work. The Students who gave of their time and talents are deserving of praise and commendation.

This 1944 Annual takes its place among those which have preceded it. That it should equal its predecessors in content and format speaks well for the abilities of the Editorial Staff. We trust this Annual will be received with a spirit of good will and appreciation by all its readers.

Fr. Felix, C. P.



# SENIOR CLASS OFFICERS



**BOB VAN LEEUWEN**—"Great Works are performed not by strength, but by perseverance." Class President 4, Glee Club 2-3, Dramatics 3, Choir 2-3, Class Secretary 3, Military Drill 3.



**CHRIS GEORGE**—"Strength of mind is exercise, not rest." Sodality Treasurer 4, Class Vice President 2-4, Sales Manager of the Francian 4, Military Drill 3, Dramatics 3-4, Altar Boy 3.



**MIKE THOMAS**—"It is meat and drink to me to see a clown." Class Secretary 1-4, Altar Boy 1-2-3-4, Military Drill 3.



**EDWARD CLARKIN**—"A true friend to a man is a friend to all his friends." Class Treasurer 4, Athletics 1-2-3-4, Dramatics 3-4, Sports Editor of the Francian 4, Glee Club 2-3, Choir 3.



BOB BELLER—"The imagination never dies." Athletics 2-3-4, Military Drill 3.

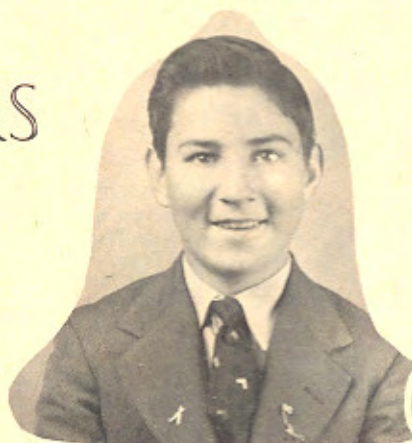


EILEEN BORN—"Joy is more divine than sorrow." Glee Club 2-4, Dramatics 3-4, Military Drill 3, Choir 2-4, Annual Queen 4.



ROSEMARY CRAGER—"No legacy so rich as honesty." Glee Club 1-2-3, Choir 1-2-3, Dramatics 4.

## SENIORS



LEON GLASSBURN—"A brave man never dies." Athletics 1-2-3-4, Military Drill 3, Dramatics 3-4.



HARRIET FORTUNE—"Life without laughing is a dreary blank." Glee club 1-2, Dramatics 4, Pep Club 2-3, Choir 1, Military Drill 3.



RACHEL HAVELY—"Pleasure and action make the hours seem short." Glee Club 1-2-3-4, Dramatics 2-3-4, Military Drill 3, Pep Club 3.



JAMES CARROLL—"The only health which will not decay is knowledge." Athletics 1-2-3-4, Altar Boy 1-2-3-4, Military Drill 3, Class Reporter of the Francian 4, Dramatics 4, Class President 1.



RALPH FAGER—"Life is less than nothing without love." Glee Club 2-3, Bus. Manager of the Francian 4, Military Drill 3, Altar Boy 2-3-4, Choir 2-3, Dramatics 4.



PAUL McCALL—"Wear the old coat and buy a new book." Glee Club 2, Choir 2-3, Military Drill 3, Altar Boy 1-2-3.



MARGARET MARY O'BRYAN—"One honor won is a surety for more." Editor-in-Chief of The Francian 4, Dramatics 3-4, Pep Club 2-3, Class President 1-3.



GERALD SCHOENHOFER—"Not liberty, but duty is the condition of existence." Altar Boy 1-2-3-4, Athletics 1-2-3-4, Dramatics 4.



MARY PAT PHELAN—"Life is not so short that there is not always time for courtesy." Glee Club 1-2-3-4, Pep Club 2-3, Choir 1-2-3-4, Dramatics 4, Military Drill 3.



JACK SCHNEIDER—"Virtuous men alone possess friends." Glee Club 2-3, Athletics 1-2-3, Altar Boy 1-2-3-4, Choir 2-3, Military Drill 3, Class Treasurer 1.

## SENIORS



THERESA MARIE GRILLOT—"Laughing cheerfulness throws sunlight on all the paths of life." Glee Club 1-2-3-4, Pep Club 2-3, Orchestra 1-2-3, Choir 1-2-3-4, Dramatics 3-4, Assistant Editor of the Francian 4, Military Drill 3.



LAWRENCE KENNEDY—"Constancy in labor will conquer all difficulties." Glee Club 3, Choir 3, Athletics 3-4, Dramatics 4, Military Drill 3, Annual King 4, Altar Boy 3-4.



MARGARET MARY McCLARNAN—"Music rather than poetry should be called 'the happy art'." Glee Club 1-2-3-4, Choir 1-2-3-4, Pep Club 2-3, Dramatics 3-4, Military Drill 3, Orchestra 1-2-3-4.



**DARLENE MADL**—"True humility is contentment." Glee Club 1-2, Choir 1-2, Military Drill 3.



**EUGENIA VAN LEEUWEN**—"Genius begins great work, labor alone finishes." Military Drill 3.



**JOHN VITT**—"Ideals are the world's power." Altar Boy 1-2-3, Military Drill 3.



**BOB SMITH**—"To grace this latter age with noble deeds." Glee Club 4, Choir 4, Athletics 1-2-3-4, Military Drill 3, Altar Boy 1-2-3-4.



**ALICE NUNNINK**—"A person's mind is known by the company it keeps." Glee Club 1-2-3-4, Pep Club 2-3, Dramatics 4, Choir 1-2-3, Military Drill 3, Orchestra 2.



**LEONARD WESTHOFF**—"Truth is truth, however it may strike." Glee Club 2, Athletics 1-2-3-4, Altar Boy 2-3, Military Drill 3, Class Treasurer 2, Dramatics 4.



**ANNA MARIE STANDFAST**—"Few things are impossible to diligence and skill." Glee Club 1-2, Orchestra 2, Pep Club 2-3, Choir 1-2, Dramatics 4, Military Drill 3.



**THERESA STEINBACHER**—"Beauty is a welcome guest everywhere." Glee Club 1-2-3-4, Orchestra 2, Pep Club 2-3, Sodality Prefect 4, Dramatics 3-4, Military Drill 3, Choir 1-2-3-4, Picture Editor of the Francian 4.



**PATRICIA THOMAS**—"There is a great deal in the first impression." Glee Club 2, Pep Club 2-3, Sodality Secretary 4, Class Treasurer 2, Dramatics 3-4, Military Drill 3, Choir 1-2, Assistant Editor of the Francian 4.