

Seniors

Class



LORAIN BORN

"If smiles were worth their weight in gold, She'd be a millionaire."

Class Treas. 1, Class President 3-4, Sodality Vice Prefect 4, Glee Club 1, Pep Club 1-2-4, Orchestra 1-2-3-4, Typing Awards 3, Shorthand Awards 4, Home Ec. 2, Annual Reporter 3, Choir 1-2-3-4, Catholic Advance Reporter 4, Dramatics 2-3-4.

Officers



RITA FAYE PAINE

"All of her time is spent at work, A girl who never has time to shirk."

Glee Club, 1-2, Home Ec. 2-3, Reporter 2, Class Vice President 4, Editor-in-chief of Francian 4, Typing Award 3, Shorthand awards 4.



MARY CATHERINE BUTLER

"She tries her best to do her best, And does it better than the rest."

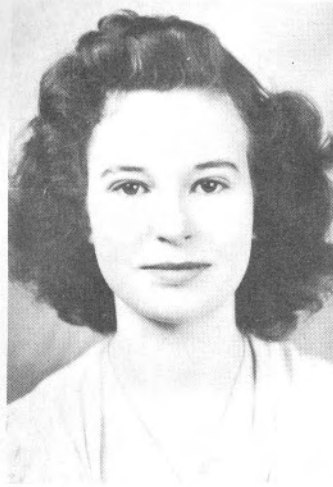
Class Secretary 1, Vice President 3, Treasurer 4, Pep Club 1, Orchestra 1-2-3, Glee Club 1-2-3-4, Typing Awards 3, Shorthand Awards 4.



RITA MAY McCALL

"A merry, witty girl is she, and a pretty girl you all can see."

Glee Club 1-2, Home Ec. 2-3, Annual Reporter 2, Class Secretary 2-4, Typing Award 3, Dramatics 2-3-4.



MARY KATHRYN
LaFORGE

"A personality quite worth
while,
For all her friends she has a
smile."
Glee Club 1-2, Pep Club 1-2-
3-4, Gym 2, Home Ec. 1-2-4,
Dramatics 2-3.

CASEY O'BRYAN
"Tends strictly to his own
business,
And knows what it is."
Athletics 1-2-3, Orchestra 1-2,
Altar Boy 1-2-3, Class Secre-
tary 3, Dramatics 1-3.

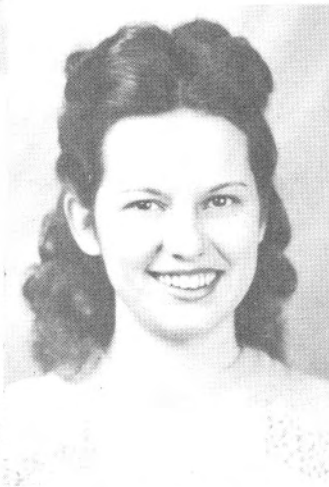


REGINA SEVART
"Why let the day pass with-
out one good deed?
It would be a failure, and there
is no need."
Glee Club 1-2, Home Ec. 2-3-4,
Typing Award 3, Dramatics
3-4.

VENETA SCHOENHOFER
"If I'm not enjoying myself,
I'll pass the time studying."
Glee Club 1-2, Pep Club 1-2,
Choir 1-2-3, Dramatics 2-3-4,
Active member of 4-H 1-2-3-4,
County 4-H Champion 3-4.

BETTY FAGER
"She is a jolly girl. but is in-
clined to keep it a secret."
Physical Education 1-2, Pep
Club 1-2.

MARY LOU VOLMER
"Personality and charm com-
bined
With other pleasant qualities
not hard to find."
Glee Club 2-3, Pep Club 2-4,
Orchestra 2-3-4, Home Ec.
1-2-4, Popularity Queen 1,
Typing Awards 3, Business
Manager of Francian 4.

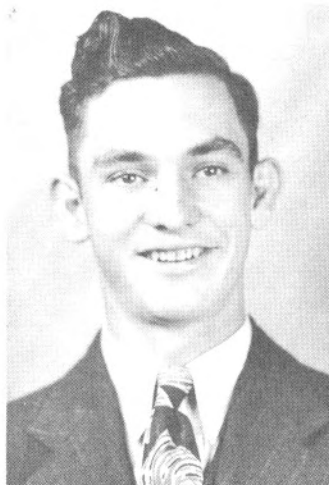


ALBAN VENNEMAN
"Happy go lucky and free,
nothing ever bothers me."
Glee Club 1-2, Choir 1-2, Ath-
letics 1, Dramatics 3-4, His-
tory 1-2-3-4.

BARBARA JEAN KNOTT
"She is proof that brunettes
are just as charming and
lovely as blondes."
Class Queen 1, Glee Cub 1-2-
3-4, Pep Club 1-2-3-4, Home
Ec. 2-4, Athletics 1-2-3.

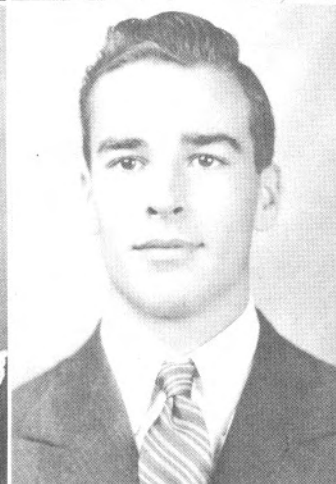


BERNARD COOMES
 "He has made an unusual decision,
 To be a gentleman is his greatest ambition."
 Glee Club 1-2, Class President 1, Secretary of Class 3, Athletics 1-2-3-4, Sports Editor of Francian 4.



PATSY McCLARNAN
 "She has eyes that sparkle and shine,
 There are few of her kind."
 Glee Club 1-2, Pep Club 1-2-4, Advisory Board 4, Sodality Treasurer and Secretary 4, Typing Awards 3, Shorthand Awards 4, Committee head 1-4, Choir 1-2-4, Dramatics 2-3-4.

MARY AGNES VITT
 Small of stature, large of heart,
 Always willing to do her part."
 Glee Club 1-2, Home Ec. 2-3-4, Typing Award 3, Dramatics 2-3-4.



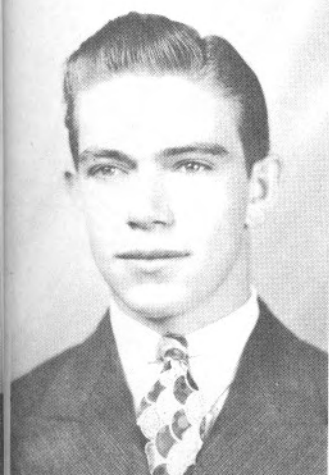
FRANCIS GROSIDIER
 "Some say he's quiet—they aren't acquainted with him."
 Glee Club 3, choir 3, Athletics 1-2-3-4, Sports Editor 4, Sodality Prefect 2, Dramatics 2-3-4, Popularity King 3.



ROSE MARY VOLMER
 "Cute, peppy, little girl whose greatest enjoyment is talking."
 Glee Club 2, Home Ec. 1-2-3-4, Dramatics 2-3-4, Pep Club 1-2-3-4, History 1-2-3.

ANNA BERNIECE LERO
 "Always friendly, just the same,
 Always square in life's old game."
 Glee Club 2, Dramatics 4, Choir 3-4.

JOE SEVART
 "A loyal fellow in every phase of life."
 Class Treasurer 2-3, Athletics 2-4, Glee Club 1-2-3, Orchestra 3-4, Choir 1-2-3-4, Assistant Treasurer 4; Typing Award 3



JEAN ANN COONEY
 "The ambitious are capable of doing anything."
 Vice President of Class 1, Pep Club 1-2-4, Vice President of Pep Club 2, President of Pep Club 4, Typing Awards 3, Shorthand Awards 4, Popularity Queen 3, Dramatics 2-3-4, Vice Prefect of Sodality 3, Prefect of Sodality 4, K.S.S.U. Reporter 4, Bulletin Reporter 1-2-3-4, St. Paul Journal Reporter 4, Choir 1-2-3-4, Glee Club 1-2-4, Home Ec. 2-4.

