



Happy Indian boys of a century ago take time from studies to be photographed in front of Osage Manual Labor School.

Nothing goes faster than time. This year St. Paul celebrates its centennial—the one-hundredth anniversary of the arrival of two Jesuit priests, Rev. John Schoenmakers and Rev. John Bax, and three lay brothers, who, on May 10, 1847, opened the Osage Manual Labor School for Indian boys in what was first known as Osage Mission. In October of the same year, a girls' school was opened under the supervision of four sisters of Loretto. Each of the buildings could comfortably accommodate twenty pupils.

But time brings changes and improvements. The rapid progress of the first fourteen students drew others, and in 1849 a two-story log schoolhouse was built. Improvements continued, until, on January 24, 1923, the present St. Francis School was dedicated. It contains four grade school rooms, five high school rooms, besides a gymnasium, laboratory, library and music room. On roll are 282 pupils, taught by two Passionist Fathers, twelve Sisters of St. Joseph, and an athletics coach.

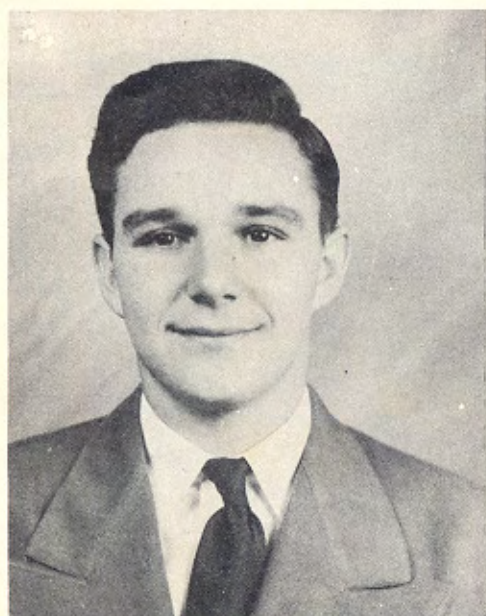
Civilization progresses with the passage of time. The Indian boys who attended the Osage Manual Labor School studied spelling, reading, writing, mathematics, geography, and agriculture; the girls were taught the same branches and also sewing, knitting, drapery and drawing. Today the students of St. Francis High School have many other advantages: science, home economics, aeronautics, languages, music, commerce, and athletics are among the subjects offered.

Time has wrought many changes during the past one hundred years. But tradition is strong in Osage Mission, and the zeal of the pioneer Jesuits and Sisters of Loretto has found its echo in the work of the Passionists and the Sisters of St. Joseph, and St. Francis school today takes its rightful place among the progressive schools of the diocese and state.

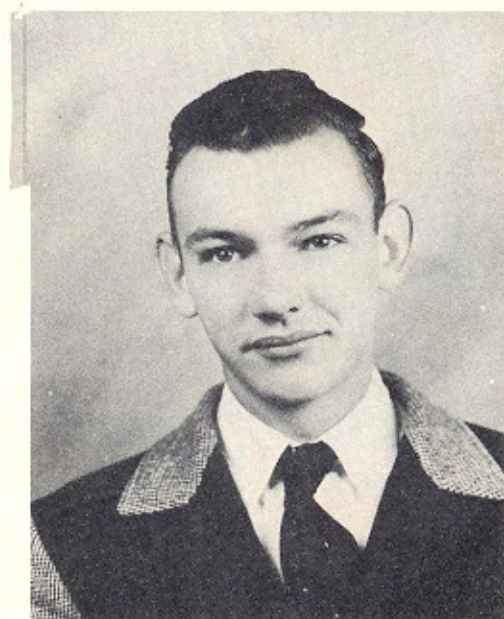
St. Francis School, the successor of the Osage Manual Labor School, as it appears today to the traveler along the highway.



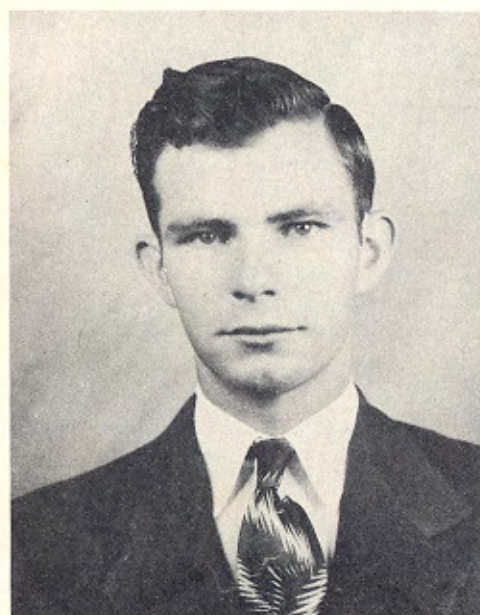
Seniors



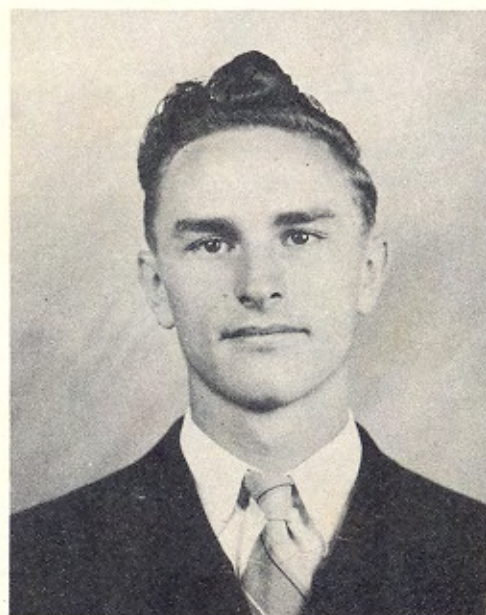
FRANCIS VOLZ, PRESIDENT
Class President 4; Class Vice-President 1, 2; Sodality 1, 2, 3, 4; Francian Staff 4; Maroon and Gold Staff 4; Class Plays 1, 3, 4.



WAYNE COOMES, VICE-PRESIDENT
Class Vice-President 4; Sodality 1, 2, 3, 4; Latin Club 2, 3 (Pontifex Maximus 3); Francian Staff 4; Basketball 1, 2, 3, 4; Armory Ball 1, 2, 3, 4; Class Plays 1, 3, 4; Acolyte 1, 4.



BEN CRAGER, SECRETARY
Class Treasurer 3; Class Secretary 4; Sodality 1, 2, 3, 4; Basketball 1, 2, 3, 4; Armory Ball 1, 2, 3, 4; Class Play 3; Acolyte 1, 2, 3.



RALPH GROSIDIER, TREASURER
Class Treasurer 3, 4; Sodality 1, 2, 3, 4; Francian Staff 4; Basketball 2, 3, 4; Armory Ball 1, 2, 3, 4; Class Plays 1, 2.



JEAN BEGEY

Class Treasurer 1; Sodality 1, 2, 3, 4; Glee Club 1; Cheerleader 4; Francian Staff 4; Class Plays 1, 3.



MARY LOU CRAGER

Sodality 1, 2, 3, 4; Glee Club 1; Band 1, 2, 3; Orchestra 1, 2, 3; Camera Club President 4; Pep Club 1, 2, 3, 4; Cheerleader 2, 4; Francian Staff 4; Class Plays 1, 3.



JOAN DEVINE

Sodality 1, 2, 3, 4; Glee Club 1; Pep Club 1, 2, 3, 4; Francian Staff 4; Class Plays 1, 3; Maroon and Gold Staff 4.



HELEN FAGER

Sodality 2, 3, 4; Pep Club 2, 3, 4; Class Play 4.



RONALD FAGER

Sodality 1, 2, 3, 4; Armory Ball 4; Francian Staff 4; Class Play 1.



RITA DISKIN

Band 1, 2, 3, 4; Orchestra 1, 2, 3, 4; Glee Club 1; Class Secretary 1; Sodality 1, 2, 3, 4; Pep Club 1, 2, 3, 4; Cheerleader 2, 3, 4; Francian Staff 4; Maroon and Gold Staff 4; Class Plays 1, 3.



Seniors



MATTHEW FOX
Sodality 1, 2, 4; Basketball 1, 2, 4; Armory Ball 1, 2, 4; Acolyte 1, 2.



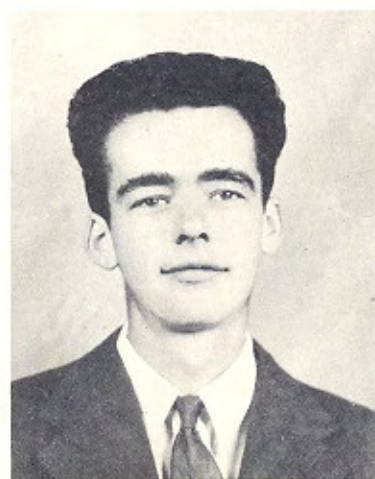
ANDREW GOUVION
Latin Club 3, 4; Sodality 1, 2, 3, 4; Basketball 2, 3, 4; Armory Ball 1, 2, 3, 4; Class Plays 1, 3.



CHARLES GRILLOT
Band 1, 3, 4; Orchestra 1, 3, 4; Glee Club 4; Basketball 1, 3, 4; Armory Ball 1, 2, 3, 4; Francian Staff 4; Maroon and Gold Staff 4; Acolyte 1, 2, 3, 4; Sodality 1, 2, 3, 4; Class Plays 1, 3, 4.



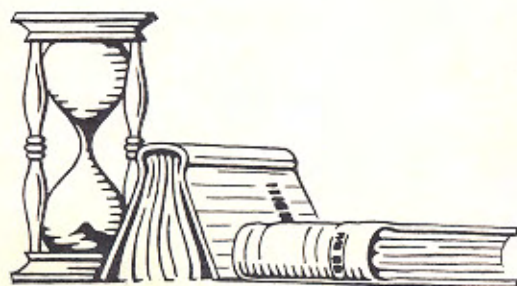
VIRGINIA GRONER
Glee Club 1; Sodality 1, 2, 3, 4; Pep Club 3, 4; Class Play 1.



BERNIE LIEBST
Hazleton High School 1, 2, 3; Armory Ball 4; Basketball 4; Class Play 4.



BETTE MUNDING
Sodality 3, 4; Camera Club Secretary 4; Cheerleader 4; Francian Staff 4; Class Plays 3, 4.





PHILIP NICOLAS
Glee Club 1, 4; Band 1, 2, 3, 4;
Orchestra 1, 2, 3, 4; Sodality 1,
2, 3, 4; Basketball 1, 2, 4; Arm-
ory Ball 4; Class Plays 1, 3, 4.



RUTH O'BRYAN
Class President 1; Vice-Presi-
dent 3; Sodality 1, 2, 3, 4 (Secre-
tary 4); Glee Club 1; Band 2, 3,
4; Orchestra 2, 3, 4; Editor,
Francian 4; Maroon and Gold 4;
Pep Club 1, 2, 3, 4; Plays 1, 3.



JEANNE SNAVELY
Glee Club 1; Band 1, 2, 3, 4; Or-
chestra 1, 2, 3, 4; Class Secretary
3; Sodality 1, 2, 3, 4; Pep Club 1,
2, 3, 4; Francian Staff 4; Editor,
Maroon and Gold 4; Class Plays
1, 2, 3.



KENNETH OWENS
Sodality 1, 2, 3, 4 (Treasurer 4);
Glee Club 1, 4; Band 1, 2, 3, 4;
Orchestra 1, 2, 3, 4; Class Presi-
dent 3; Secretary 2; Basketball 1,
2, 3, 4; Armory Ball 2, 3, 4;
Francian Staff 4; Maroon and
Gold Staff 4; Acolyte 1, 2, 3, 4



LAVON SPEAKE
Sodality 1, 2, 3, 4 (Prefect 4);
Glee Club 1; Band 1, 2, 3, 4; Or-
chestra 1, 2, 3, 4; Class President
2; Pep Club 1, 2, 3, 4; Francian
Staff 4; Maroon and Gold Staff
4; Class Plays 1, 2, 3, 4.



RUTH SCHOENHOFER
Sodality 1, 2, 3, 4; Glee Club 1;
Pep Club 1, 2, 3, 4.



Seniors



ARNOLD TYE
Girard High School 1; Sodality
2, 3, 4.



HUBERT VAN LEEUWEN
Class Treasurer 2; Sodality 1, 2,
3, 4 (Vice-Prefect 4); Class Plays
2, 3, 4.



LOIS VAN LEEUWEN
Francian Staff 4; Maroon and
Gold Staff 4; Sodality 1, 2, 3, 4;
Glee Club 1; Pep Club 3, 4 (Sec-
retary-Treasurer 4); Class Plays
1, 2.



MARGARET VITT
Sodality 1, 2, 3, 4; Francian Staff
4; Maroon and Gold Staff 4;
President, Pep Club 4; Glee Club
1; Class Plays 1, 2, 3, 4.



WALTER VITT
Sodality 1, 2, 3, 4; Class Play 1.

Class Patron
Our Lady of Fatima

Class Motto
Ad Jesum per Mariam

Class Colors
Blue and Silver

Class Flower
Forget-me-not

