

49'ers



Joyce Fleming, President

Born January 23, 1932, Julesburg, Colorado
Class President 4; Class Vice-President 3; Camera Club 2; Editor, Francian, 4; Cheerleader 3; Latin Club 2, 3; Pontifex, Latin Club 3; "Thanks Awfully" 3; "Don't Take My Penny" 3.

Theresa Grosdidier, Vice-President

Born July 27, 1931, St. Paul, Kansas
Sodality 1, 2, 3, 4; Class Vice-President 2, 4; Francian Staff 4; Glee Club 1; Pep Club 1, 2, 3, 4; Cheerleader 3, 4; Orchestra 2.

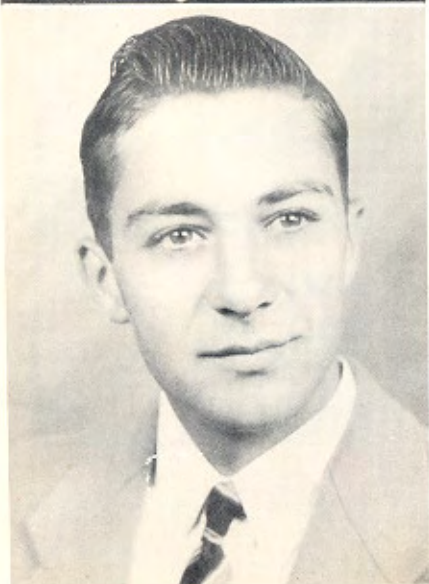


Bernard Casey, Secretary

Born April 24, 1931, St. Paul, Kansas
Class Secretary 4; Francian Staff 4; Basketball 1, 2, 3, 4; Armory Ball 1, 2, 3, 4; Sodality 1, 2, 3, 4.

Leonard McAtee, Treasurer

Born August 9, 1930, Walnut, Kansas
Sodality 1, 2, 3, 4; Class Treasurer 4; Basketball 3, 4; Armory Ball 3, 4; Acolyte 1, 2, 3, 4; "Thanks Awfully" 3; "Don't Take My Penny" 3; Francian Staff 4.



49'ers

EILEEN BALFAY

Born October 11, 1931, St. Paul, Kansas
Sodality 1, 2, 3, 4. Sodality Vice-Prefect 4; Class Secretary 1; Francian Staff 4; Glee Club 1, 2; Pep Club 1, 2, 3, 4; "Thanks Awfully" 3; Latin Club 1, 4; Band 1, 2, 3, 4; Orchestra 1, 2, 3, 4.

BENNIE JOE BRADSHAW

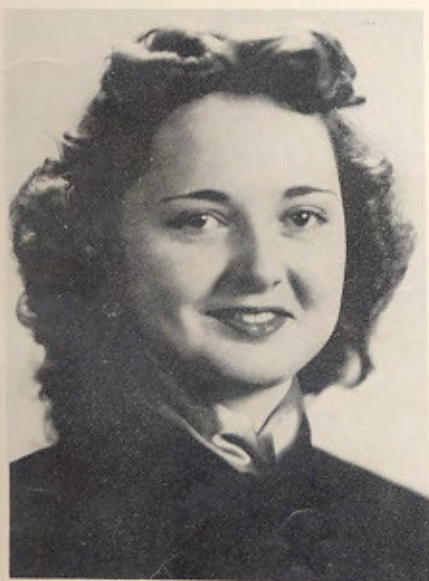
Born September 15, 1931, Walnut, Kansas
Sodality 1, 2, 3, 4.

ROSE MARY BROWN

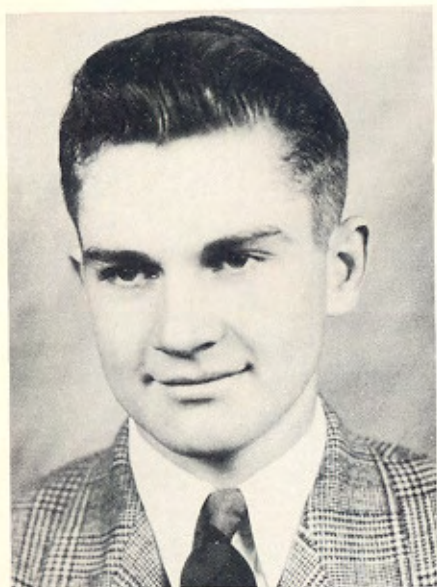
Born May 12, 1932, St. Paul, Kansas
Sodality 1, 2, 3, 4; Camera Club 2; Francian Staff 4; Glee Club 1; Cheerleader 4; Band 1, 2, 3, 4; Orchestra 1, 2, 3, 4.

DORIS JEAN CASEY

Born January 26, 1931, Parsons, Kansas
Class Secretary 1; Sodality Treasurer 4; Francian Staff 4; Glee Club 1, 2; Pep Club 1, 2, 3, 4; Orchestra 1, 2, 3, 4; "Thanks Awfully" 3; Latin Club 1; Band 1, 2, 3, 4; Sodality 1, 2, 3, 4.



49'ers



KENNETH DISKIN

Born February 12, 1931, Parsons, Kansas
Class President 1; Class Secretary 2; Sodality Secretary
4; Francian Staff 4; Maroon and Gold Staff 2; "Don't
Take My Penny" 3; Basketball 1, 2, 3, 4; Armory Ball
1, 2, 3, 4; Acolyte 1, 2, 3, 4; Sodality 1, 2, 3, 4.

JOE FAGER

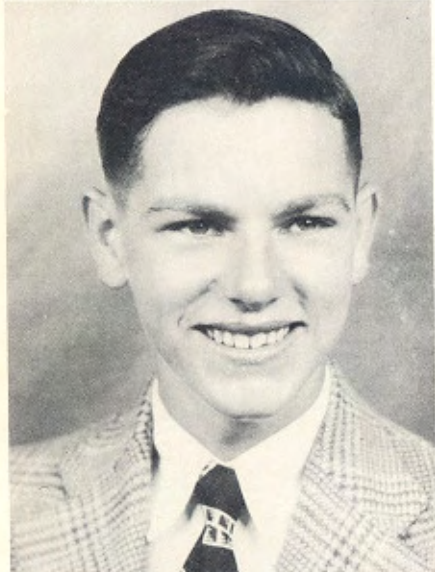
Born April 9, 1932, Walnut, Kansas
Sodality 1, 2, 3, 4.

RAY FAGER

Born May 26, 1931, Walnut, Kansas
Sodality 1, 2, 3, 4; Basketball 2, 3, 4; Armory Ball 2, 3, 4.

LEONE GAHAGAN

Born July 10, 1932, McCune, Kansas
Camera Club 2, 3; Sodality 1, 2, 3, 4; Francian Staff 4;
Maroon and Gold Staff 3; Glee Club 1, 4; Pep Club 1, 2, 3,
4; "Thanks Awfully" 3.



49'ers

JO ANN GEORGE

Born March 3, 1931, Wichita, Kansas
Sodality 1, 2, 3, 4; Francian Staff 4; Maroon and Gold Staff 2; Glee Club 1, 2; Pep Club 1, 2, 3, 4; Latin Club 2, 4; Band 1, 2, 3, 4; Orchestra 1, 2, 3, 4; "Thanks Awfully" 3.

RAYMOND E. KENNEDY

Born December 14, 1931, St. Paul, Kansas
Sodality 1, 2, 3, 4; Basketball 3, 4; Armory Ball 4.

CHARLENE McCALL

Born June 8, 1931, St. Paul, Kansas
Francian Staff 4; Sodality 1, 2, 3, 4; Camera Club 2, 3, 4; Glee Club 1, 4; Pep Club 1, 2, 3, 4; "Thanks Awfully" 3.

GERALDINE McMAINS

Born February 4, 1932, St. Paul, Kansas.
Sodality Prefect 4; Sodality 1, 2, 3, 4; Pep Club 1, 2, 3, 4; Glee Club 1; Class Treasurer 3; "Thanks Awfully" 3; Francian Staff 4; Camera Club 2, 3, 4.



49'ers



ALBAN MADL

Born May 9, 1931, St. Paul, Kansas
Walnut High School 1, 2, 3; Sodality 4.

GRACIE O'BRYAN

Born March 18, 1931, Parsons, Kansas
Sodality 1, 2, 3, 4; Camera Club 2; Class Secretary 3;
Francian Staff 4; Maroon and Gold Staff 2; Glee Club
1, 2, 3; Pep Club 1, 2, 3, 4; "Thanks Awfully" 3; Band
1, 2, 3, 4.



PHYLLIS ANN PHELAN

Born October 5, 1931, St. Paul, Kansas
Sodality 1, 2, 3, 4; Camera Club 2, 3, 4; Glee Club 1, 4;
"Thanks Awfully" 3; Francian Staff 4; Pep Club 1, 2, 3, 4

ROSEMARY SEVART

Born August 4, 1931, Parsons, Kansas
Francian Staff 4; Camera Club 2, 3, 4; Glee Club 1, 2, 3;
Pep Club 1, 2, 3, 4; "Thanks Awfully" 3; Band 1, 2, 3, 4;
Orchestra 1, 2, 3, 4; Sodality 1, 2, 3, 4.



49'ers

JOHN STANDFAST

Born December 26, 1929, St. Paul, Kansas

Basketball 1, 2, 3, 4; Armory Ball 1, 2, 3, 4; Acolyte 1, 2, 3, 4; Sodality 1, 2, 3, 4.

SARA STEINBACHER

Born July 31, 1931, South Mound, Kansas

Sodality 1, 2, 3, 4; Glee Club 1, 2, 3, 4; Pep Club 1, 2, 3, 4; "Thanks Awfully" 3; Francian Staff 4.

TOM STRASSER

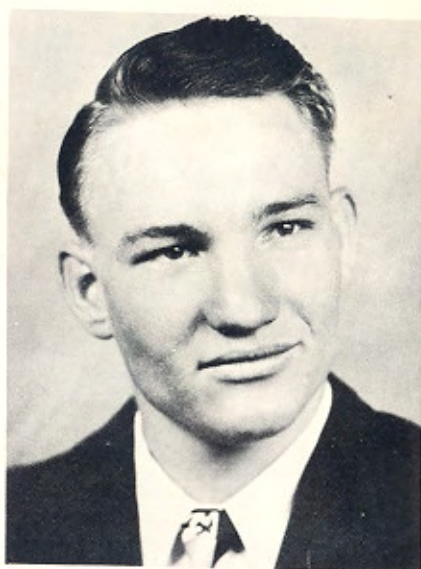
Born February 16, 1931, St. Paul, Kansas

Sodality 1, 2, 3, 4; Glee Club 1, 2, 3, 4; Acolyte 1, 2, 3, 4; Band 1, 2, 3, 4.

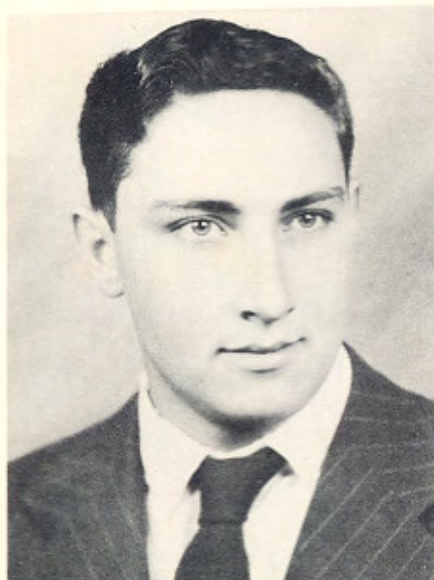
BETTY JEAN THOMAS

Born January 17, 1932, St. Paul, Kansas

Camera Club 2, 3; Sodality 1, 2, 3, 4; Glee Club 1, 4; Pep Club 1, 2, 3, 4; "Don't Take My Penny" 3; Francian Staff 4.



49'ers



JERRY VAN LEEUWEN

Born December 30, 1930, St. Paul, Kansas
Sodality 1, 2, 3, 4; Armory Ball 3, 4.

LORENE VAN LEEUWEN

Born August 2, 1930, Parsons, Kansas
Sodality 1, 2, 3, 4; Camera Club 2; Pep Club 4.

THEODORE VAN LEEUWEN

Born July 16, 1931, St. Paul, Kansas
Sodality 1, 2, 3, 4.



MARY CATHERINE VITT

Born November 27, 1930, St. Paul, Kansas
Band 3, 4; Orchestra 1, 3, 4; Sodality 1, 2, 3, 4; Pep
Club 1, 2, 3, 4; Camera Club 3; Glee Club 1, 2, 3, 4;
"Thanks Awfully" 3.



49'ers

PAUL VITT

Born December 29, 1930, St. Paul, Kansas
Sodality 1, 2, 3, 4; Basketball 3, 4; Armory Ball 3, 4.

MICKEY WALKER

Born September 6, 1931, St. Paul, Kansas
Acolyte 1, 2, 3, 4; Sodality 1, 2, 3, 4; Basketball 2, 3, 4;
Armory Ball 3, 4.

THERESE ROSE WESTHOFF

Born December 9, 1931, Greenbush, Kansas
Sodality 1, 2, 3, 4; Glee Club 1, 2, 3, 4. Pep Club 1,
2, 3, 4; "Thanks Awfully" 3; Band 1; Orchestra 1.

RAY WILLSON

Born July 16, 1931, St. Paul, Kansas
Class President 2, 3; Orchestra 1, 2, 3; Band 3; Maroon
and Gold Staff 2; Latin Club 2, 3; Praetor, Latin Club 3;
Glee Club 2; Camera Club President 2.

