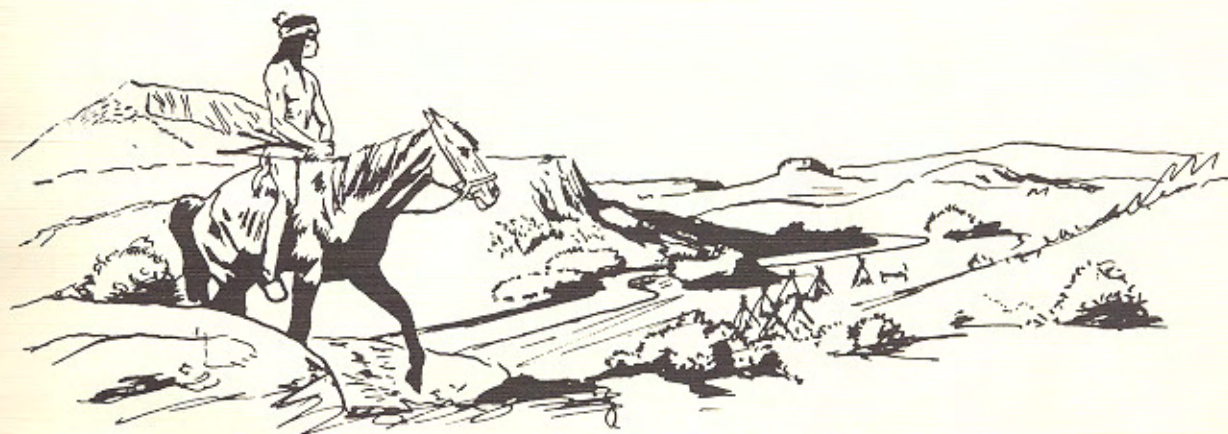


The Indian



Published by
THE SENIOR CLASS
of 1953

#1909

ST. PAUL HIGH SCHOOL
ST. PAUL, KANSAS

Sponsored By

Owens Department Store, St. Paul, Kansas

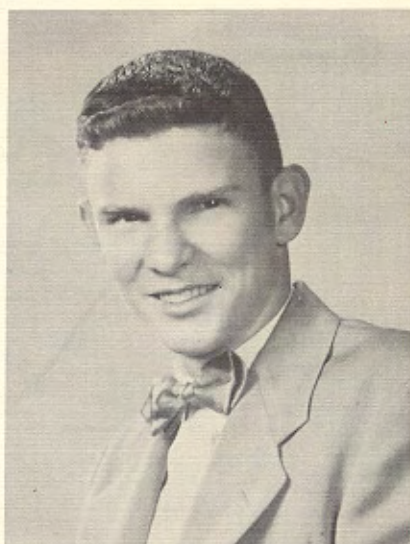
St. Paul Oil Company, St. Paul, Kansas



ALBERTA SEVART

*"Always laughing, never sad—
sometimes naughty, but never bad."*

Sodality 1, 2, 3, 4, Class President 1, 4,
Glee Club 1, 2, 3, Class Play 3, Latin 1, 2,
Indian Staff 4, Pep Club 1, 2, 3, 4.



DENNIS EBERWEIN

*"It does not pay to worry;
things happen anyway."*

Class Vice President 4, Sodality 1, 2, 3, 4,
Class Secretary 3, Class Play 3, Indian Staff 4,
Student Council 4, Pow Wow Staff 4,
Pep Club 1, 2, 3, 4.



Class Flower:
Red Rose

Seniors
1953



MARY McMAINS

*"If there is mischief in the air,
she put it there."*

Sodality 1, 2, 3, 4, Class Secretary 4,
Class Treasurer 2, Band 1, 2, 3, 4, Glee Club 1, 2, 3,
Class Play 3, Indian Staff 4, Cheer Leader 2, 3, 4.

DON MADL

"Like Paul Revere—he rides at night"

Sodality 1, 2, 3, 4, Class Treasurer 4,
Band 1, Indian Staff 4.



Sponsored By

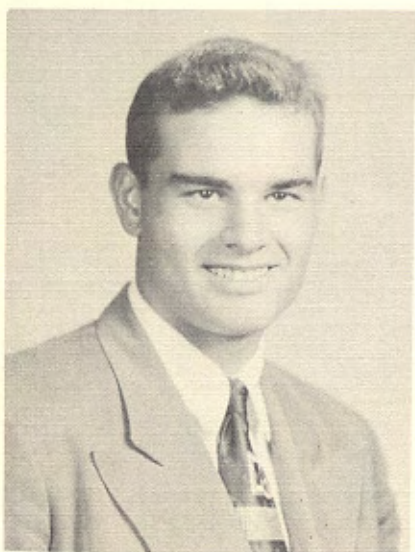
Exchange State Bank, St. Paul, Kansas



CHARLENE FAGER

*"She is gentle, she is shy,
but there is mischief in her eye."*

Sodality 1, 2, 3, 4, Sodality Vice President 4,
Class Vice President 1, Class Secretary 2,
Orchestra 1, 2, 3, Glee Club 1, 2, 3, Band 1, 2, 3, 4,
Class Play 3, Indian Staff 4, Pep Club 1, 2, 3, 4.



EDWARD GROSIDIER

*"Not that I love study less;
but I love fun more."*

Sodality 1, 2, 3, 4, Sodality Prefect 4,
Class Secretary 1, Class Treasurer 3,
Class Prefect 2, Basketball 1, 2, 3, 4,
Softball 1, 2, 3, 4, Class Play 3, Latin 1, 2.



*Class Motto:
What I am to be I am becoming*



BETTY LA FORGE

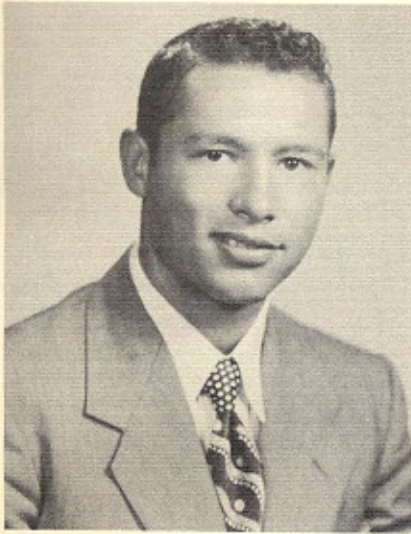
*"Not too quiet to be boring;
Not too loud to be annoying."*

Sodality 1, 2, 3, 4, Glee Club 1, 2, 3, Band 1, 2, 3, 4,
Class Play 3, Pep Club 1, 2, 3, 4, Indian Staff 4.



Sponsored By

St. Francis Church, Father Brendan, C. P., Pastor
Father Jordan, C. P., Assistant Pastor



JOHN BORN

**"When athletics and studies clash;
he lets studies go all to smash."**

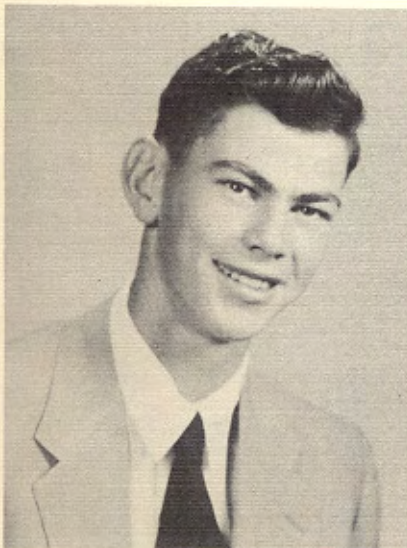
Class Treasurer 1, Class President 3,
Sodality 1, 2, 3, 4, Band 1, 2, 3,
Basketball 1, 2, 3, 4, Softball 1, 2, 3, 4,
Class Play 3, Pow Wow Editor 4,
Student Council President 4, Indian Staff 4.



PEGGY SCHNEIDER

**"Helpful in every need,
quiet in work and deed."**

Sodality 1, 2, 3, 4, Glee Club 1, Class Play 3
Indian Staff 4, Pep Club 1, 2, 3, 4.



KENNETH SCHOENHOFER

**"His mind is always on the moon,
when he enters the American History room."**

Sodality 1, 2, 3, 4, Glee Club 1,
Band 1, 2, Basketball 2, 3, 4, Pep Club 1.

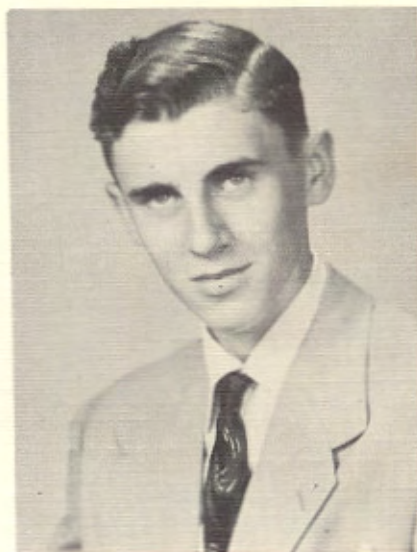
Sponsored By

Pfeiffer Jewelry Company, Parsons, Kansas
Max and Carter's Electric, St. Paul, Kansas

HUBERT SMITH

**"For not to live at ease is not
to live at all."**

Sodality 1, 2, 3, 4, Class Vice President 3,
Orchestra 1, 2, 3, Class Play 3, Indian Staff, 4.



GERTRUDE STEINBACHER

**"Merrily she goes along life's way;
never sad, always gay."**

Sodality 1, 4, Glee Club 1, Band 1, 4,
Indian Staff 4, Pow Wow 4.



Class Color:

Red and White



JERRY GEORGE

**"Little we think, less we do;
isn't it funny how we pull through?"**

Sodality 1, 2, 3, 4, Glee Club 1, 2, Band 3,
Basketball 1, 2, 3, 4, Class Play 3,
Softball 1, 2, 3, 4, Class Vice President 2.



Sponsored By

Grillot Brothers, St. Paul, Kansas

The First National Bank of Chanute, Chanute, Kansas

