



Seniors



EUGENE GRILLOT

"It is not wise to be wiser than necessary."

Class President 4; Glee Club 3; Band 2, 3, 4; Sodality 1, 2, 3, 4; Class Play 3; Orchestra 2.



CLARA DAVIED

"It's nice to be nice, when you're so naturally nice."

Class Vice-President 4; Glee Club 2; Pep Club 1, 2, 3, 4; Band 2, 3, 4; Orchestra 1; Sodality 1, 2, 3, 4; School Paper 4; Class Play 3.



1954



MARILYN LA FORGE

"Always ready for a good time and willing to help make one."

Class Secretary 4; Glee Club 1, 2; Pep Club 1, 2, 3, 4; Sodality 1, 2, 3, 4; Student Council 3; School Paper 4; Class Play 3; Orchestra 1; Latin Club 1.



PAT BEACHNER

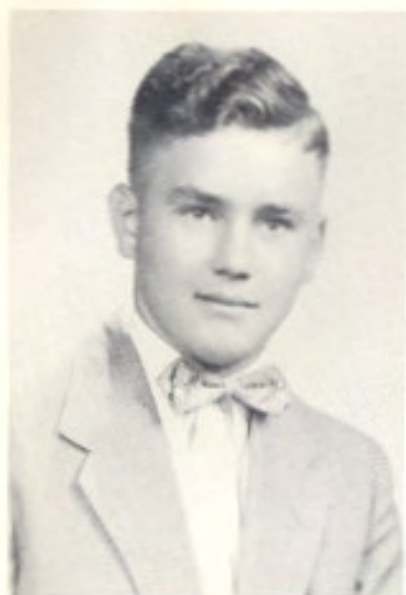
"Much study is a weariness."

Class Treasurer 4; Sodality 1, 2, 3, 4; Class Play 3; Speech Club 4.

Sponsored by

Father Loren C. P., Assistant Pastor

St. Francis Parish, Father Brendan C. P., Pastor



JACK WHELAN

"Why rush, it takes four years to get out anyway."

Society 1, 2, 3, 4; Speech Club 4; Athletics 2, 4.



JANE ANN EBERWEIN

"Lively and changeable as a flame in the wind."

Glee Club 2, 3; Cheerleader 3, 4; Pep Club 1, 2; Band 1, 2, 3; Society 1, 2, 3, 4; School Paper 3, 4; Annual Staff 4; Class Play 3; Latin Club 1; Speech Club 4.

Zettle Bakery Inc., Girard, Kansas



Seniors



ROSE AGNES VITT

"Merrily she goes along life's way never sad, always gay."

Glee Club 2, 3, 4; Pep Club 1, 2, 3, 4; Band 1, 2, 3, 4; Society 1, 2, 3, 4; Class Play 2; Girls' Athletics 3.



GEORGE FAGER

"Make good or make room—for me."

Class Treasurer 2; Society 1, 2, 3, 4; Class Play 3; Speech Club 4; Athletics 1, 2, 3, 4.



Sponsored By

Karbo Super Market, Girard, Kansas



1954



ALBAN BORN

"If study were the only cause of death,
I would live forever."

Sodality 1, 2, 3, 4; Speech Club 4; Athletics
1, 2, 3, 4.



Seniors



JOLENE GRONER

"A combination of nonsense, common
sense, and a sense of humor."

Glee Club 1, 2; Cheer Leader 1, 2, 3, 4; Majorette
2, 3, 4; Sodality 1, 2, 3, 4; School Paper 2, 4;
Annual Staff 4; Class Play 2; Latin Club 2;
Speech Club 4.



PATRICIA VAN LEEUWEN

"She does her own thinking."

Class President 1; Class Secretary 2; Glee Club
2; Pep Club 1, 2, 3, 4; Sodality 1, 2, 3, 4; School
Paper 4; Latin Club 1, 2.



1954



RAY CARTER

"Why teachers turn gray."

Sodality 1, 2, 3, 4; Class Play 2; Annual Staff 4.



Sponsored By



Seniors



LAURENCE GROSDIDIER
 "True life lies in laughter, love and sports."
 Sodality 1, 2, 3, 4; School Paper 3; Latin Club 1, 2; Speech Club 4; Athletics 1, 2, 3, 4.

MARY ALICE O'BRYAN
 "Pint size, with an overflowing measure of energy."
 Class Vice-President 2; Pep Club 1, 2, 3; Sodality 1, 2, 3, 4; Class Play 3; Latin Club 1, 2; Speech Club 4.



1954

LOU GRONER
 "Friendliness is the shortest way to success."
 Glee Club 1; Pep Club 1, 2, 3, 4; Sodality 1, 2, 3, 4; School Paper 4.



LONNY SMITH
 "He is always in the midst of fun, but only when his work is done."
 Class President 3; Sodality 1, 2, 3; Class Play 3; Latin Club 1, 2; Speech Club 3; Student Council 3; Athletics 1, 2, 3.



Sponsored by

Cathoon-Putnam Lumber Co., Girard, Kansas

Bottling Company of Pittsburg, Inc., Pittsburg, Kansas



JOHN R. GEORGE

"Let the world rush on—I'll take my time and ease."

Class Treasurer 3; Sodality 1, 2, 3, 4; School Paper 3; Class Play 3; Speech Club 4; Athletics 1, 2, 3, 4.



Seniors



CAROLYN CASEY

"She is gentle, she is shy, but there is mischief in her eye."

Glee Club 1, 2; Band 1; Sodality 1, 2, 3, 4; Latin Club 1, 2; Pep Club 1, 2, 3, 4.



MARY JO FAGER

"Catch me some time when I'm saying something."

Glee Club 1, 2, 3; Pep Club 1, 2, 3, 4; Band 1, 2, 3, 4; Sodality 1, 2, 3, 4; School Paper 4; Orchestra 1, 2; Latin Club 1.



1954



GERALD DAVIED

"He may be short, but so is life."

Class Treasurer 1; Glee Club 3; Band 2, 3, 4; Sodality 1, 2, 3, 4; Orchestra 1.



Sponsored By



BETTY BELLER

"She turns her hand to everything from basketball to making candy."
Pep Club 1, 2, 3, 4; Sodality 1, 2, 3, 4; Girl's Athletics 3, 4; Speech Club 4.



Seniors



DON GEORGE

"Beware, I may do something sensational."
Band 2, 3, 4; Sodality 1, 2, 3, 4.



CHARLES VAN LEEUWEN

"Slow but sure."
Class Vice-President 2; Class Secretary 1;
Sodality 1, 2, 3, 4; Speech Club 4.



1954



PAT LA FORGE

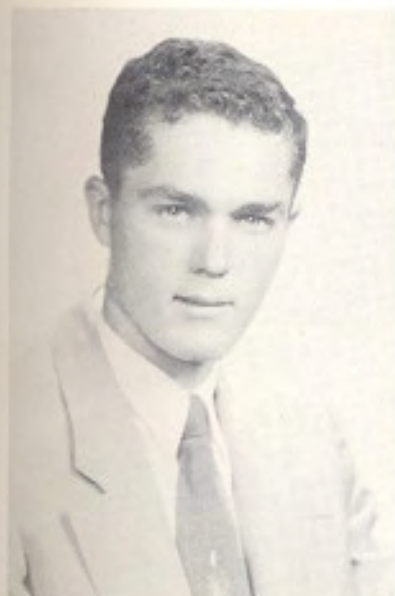
"It does not pay to worry, things happen anyway."
Band 2, 3, 4; Sodality 1, 2, 3, 4; Class Play 3;
Athletics 1, 2, 3, 4.



Sponsored by



Seniors



GENE McATEE

"I just love work, I could sit and watch it for hours."

Sodality 1, 2, 3, 4; Student Council President 4; Class Play 3; Speech Club 4; Athletics 1, 2, 3, 4.



MARTHA TITUS

"Large brown eyes running over with glee."

Pep Club 1, 2, 3, 4; Sodality 4; Student Council 4; School Paper 4; Annual Staff 4; Class Play 3; Latin Club 1, 2.



JO ANN SPEAKE

"Never idle, never still, always smiling, always will."

Class Secretary 1; Glee Club 2; Pep Club 1, 2, 3, 4; Band 1, 2; Sodality 1, 2, 3, 4; School Paper 4; Class Play 3; Latin Club 1, 2.



1954



DICK VANCE

"Rip Van Winkle's closest rival."

Band 2, 3, 4; Student Council 3, 4; Annual Staff 4; Orchestra 2; Speech Club 4; Athletics 2, 3, 4.



Sponsored by

Peterson Studio, Parsons, Kansas

The Home Savings & Loan Ass'n., Girard, Kansas