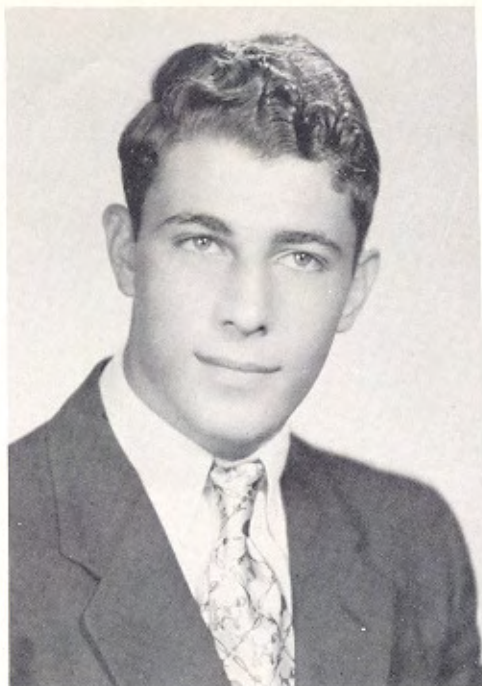


Seniors '55

Sponsored by
Brenner Drug Store
Stephan's
Parsons, Kansas



HERBERT MOSES

Class Officer 4; Annual Staff 4; Pep Club 1,2,3,4.



OLIVE FAGER

Sodality 1,2,3,4; Glee Club 1,2,3; Pep Club 1,2,3,4; Annual Staff 4; Band 1,2,3,4; Class Officer 1,3.

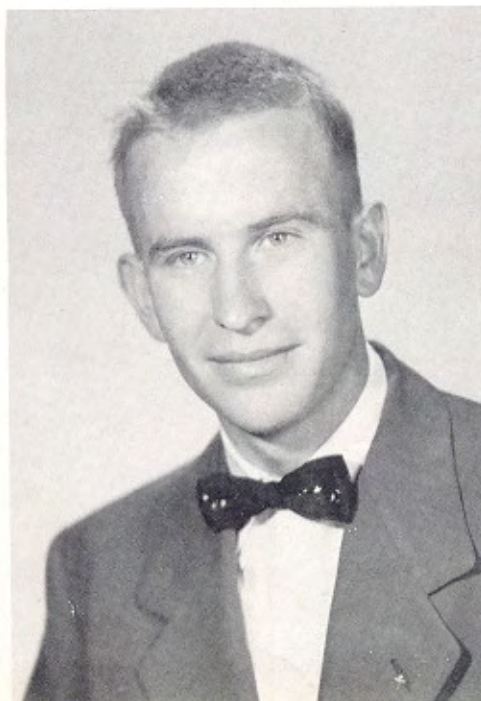
JEANETTE VAN LEEUWEN

Class Officer 1; Sodality 1,2,3,4; Band 1,2,3,4; Pep Club 1,2,3,4; Class Play 4; Annual Staff 4.



JULIAN WESTHOFF

Class Officer 2,3; Sodality 1,2,3,4; School Paper 4; Annual Staff 4; Class Play 3,4; Student Council 2; Band 4; Athletics 1,2,3; Lettermen's Club 4; Boy's State 3.



ROSE MARY GAHAGAN

Sodality 1,2,3,4; Glee Club 3; Class Play 3,4; Band 1,2,3,4; Pep Club 1,2,3,4.





MARY STEINBACHER

Class Officer 3,4; Glee Club 1; Cheerleader 3,4; Sodality 1,2,3,4; Twirler 2; School Paper 4; Class Play 4; Pep Club 1, 2,3,4.



CHARLES BROWN

Sodality 1,2,3,4; Class Play 3,4; Band 1, 2; Class Officer 3,4; Lettermen's Club 4 (Treasurer); Football 4; Basketball 1,2, 3,4.

Seniors '55

Sponsored by
Grillot Bros. Oil Co.
O'Brien Rock Crusher
St. Paul, Kansas

EVELYN LERO

Sodality 1,2,3,4; Pep Club 1,2,3,4; Class Play 4; Orchestra 1.



JAMES VAN LEEUWEN

Sodality 1,2,3,4; Lettermen's Club 4; (President); Class Play 3,4; Track 3,4; Basketball 1,2,3,4; Football 4.



SHIRLEY Mc MAINS

Sodality 1,2,3,4; Twirler 3,4; Girls' Athletics 2,3,4; Pep Club 1,2,3,4; Class Play 4; Band 1,2.



Seniors '55



WILLIAM LA FORGE

Sodality 1,2,3,4; Class Play 4; Lettermen's Club 4; Basketball 1,2,3; Track 3,4; Football 4.



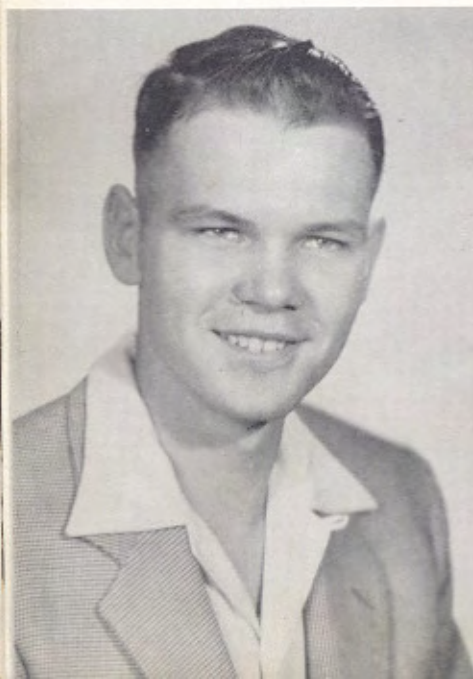
TERESA MARIE VAN LEEUWEN

Sodality 1,2,3,4; Glee Club 1; Twirler 3,4; Annual-Staff 4; Class Play 4; Pep Club 1,2,3,4; Girls' Athletics 2,3,4.

Sponsored by
D. Peterson Studio
Lambert-Duffey-Melone
Parsons, Kansas

FELIX O'BRIEN

Sodality 1,2,3,4; Lettermen's Club 4; Pep Club 1,2,3,4; Basketball 2,4; Track 3,4; Football 4.



MARY ANN MADL

Sodality 1,2,3,4; Class Officer 1,2; Glee Club 1,2; Twirler 1,2; School Paper 4; Annual Staff 4; Class Play 4; Pep Club 1,2,3,4; Girls' Athletics 1,2,4.



JOSEPH SCHOENHOFER

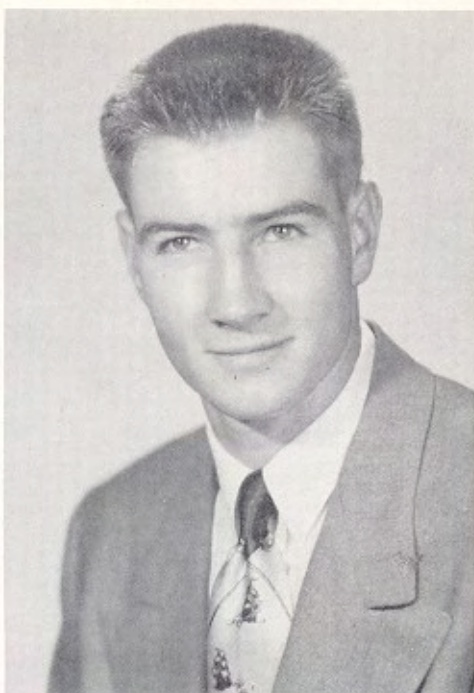
Sodality 1,2,3,4; Band 1,2; Class Play 3,4; Lettermen's Club 4; Football 4; Basketball 1,2,3; Track 3,4.





LA DONNA OWENS .

Sodality 1,2,3,4; Class Officer 1,2; Glee Club 2; Cheerleader 2,3,4; School Paper 2; Class Play 3,4; Student Council 3,4; Band 1,2,3,4; Pep Club 1,2,3,4.



DONALD VITT

Sodality 1,2,3,4; Class Officer 2,4; Lettermen's Club 4; Basketball 1,2,3,4; Softball 3; Football 4.

Seniors '55

Sponsored by
Ricketts Chevrolet Company
Millers Lockers System
Erie, Kansas

KENNETH SCHWIND

Sodality 1,2,3,4; Orchestra 1; Track 3,4; Football 4.



MAUREEN BORN

Sodality 1,2,3,4; Glee Club 1,2; School Paper 4; Class Play 4; Girls' Athletics 1,2,3; Pep Club 1,2,3,4.



JOHN BEACHNER

Sodality 1,2,3,4; Lettermen's Club 4; Class Play 4; Football 4; Track 3,4.





ROGER McCALL

Sodality 1,2,3,4; Class Officer 2; Annual Staff 4; Class Play 4; Student Council President 4; Band 1,2,3,4; Basketball 1,2.

Sponsored by

Ed O'Bryan Grain & Livestock
St. Paul Lumber and Supplies
St. Paul, Kansas

DONALD GOUVION

Class Officer 1; Class Play 4; Band 1,2,3;
Band 1,2,3,4.



MARJORIE LERO

Sodality 1,2,3,4; Glee Club 1; Cheerleader 2; Class Play 3; Pep Club 1,2,3,4.



BERNIECE SCHOENHOFER

Glee Club 1,2.; Sodality 1,2,3,4; Class Play 3,4; Band 1,2,3,4; Pep Club 1,2,3,4; Girls' Athletic 2.



JUNIOR LEE MOSES

Student Council 3,4; Athletic Manager 2, 3,4.



LEROY SCHWIND

Softball 2; Track 3,4; Football 4.

Seniors '55