



JEAN GOODSEL

Band 1, 2, 3, 4; Chorus 1, 2, 3, 4; Pep Club 1, 2, 3, 4; Majorette 2, 3, 4; Twirler 1; Cheerleader 1, 2; Basketball Attendant 2, 4; Class President 2, 3; Pep Club President 3; Sextet 3, 4; Honor Society 3, 4; Speech 4; Dramatics 4; Annual Editor 4; Junior Play. Co-Salutatorian.



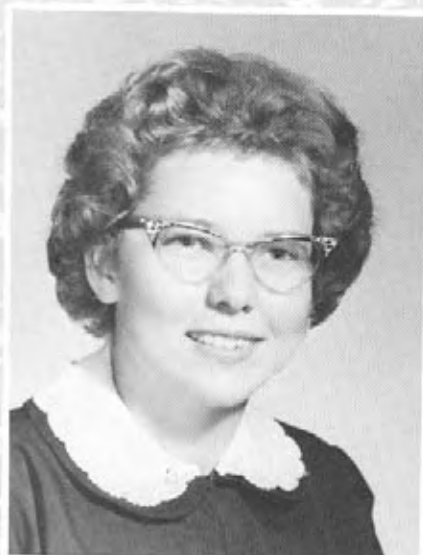
EVELYN CASEY

Band 1, 2, 3, 4; Chorus 1, 2, 3, 4; Sextet 1, 2, 3, 4; Pep Club 1, 2, 3, 4; Cheerleader 1, 2; Pep Club President 4; Pow Wow Staff 4; Student Council Rep. 2, Secretary and Treasurer 4; Class Vice-President 2, 3; Twirler 4; Assistant Annual Editor 4; Speech 4; Dramatics 4; Honor Society 4; Junior Play.

S
E
N
I
O
R
S

CAROL STURDEFANT

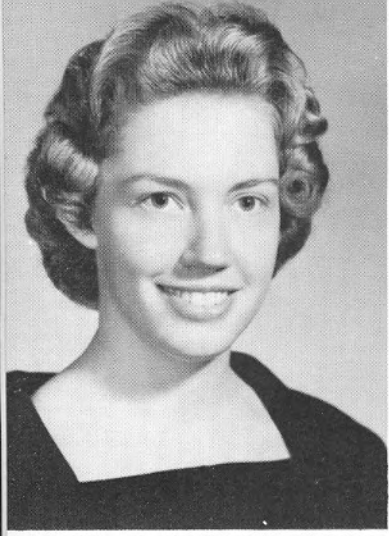
Pep Club; Chorus 1, 4; Librarian 4.



DON WOOD

Band 1, 2; F.F.A. 1, 2, 3, 4; F.F.A. Secretary 4; Track 1.





S
E
N
I
O
R
S



JOAN BORN

Class Treasurer 1, 2; Student Council Rep. 3; Cheerleader 1, 2; Pep Club 1, 2, 3, 4; Band 1, 2, 3, 4; Chorus 2, 3, 4; Speech 4; Dramatics 4; Junior Play; Football Attendant 2; Twirler 4; Pow Wow Staff 4; Annual Staff 4; Honor Society 4.

MARY TREIBER

Pep Club 1, 2, 3, 4; Pow Wow Staff 4; Chorus 1; Pep Club Secretary and Treasurer 4.



PATRICIA McATEE

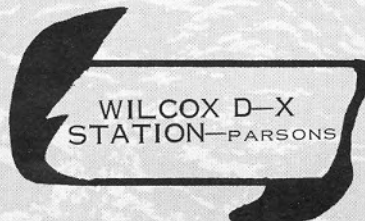
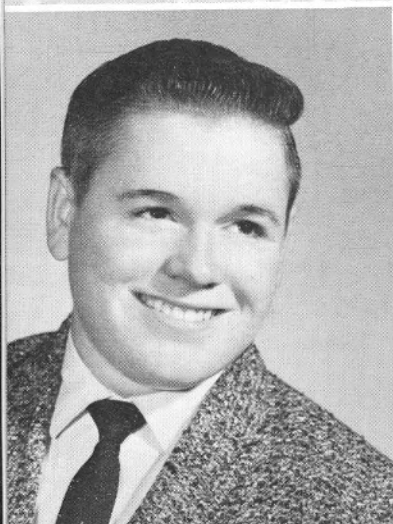
Class Treasurer 3; Class Vice-President 4; Pow Wow Editor 4; Honor Society 3, 4; Junior Play.

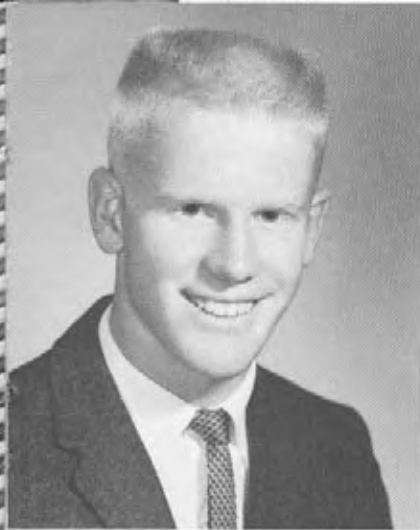
JEAN GROSIDIER

Student Council President 4; Band 1, 2, 3, 4; Chorus 1, 2, 3, 4; Pep Club 1, 2, 3, 4; Class Secretary 3; Speech 4; Dramatics 4; Honor Society 3, 4; Sextet 1, 2, 3; Junior Play.

JERRY WALSH

F.F.A. 1, 2, 3, 4; Track 1; Pow Wow Staff 4.





S E N I O R S



CHARLES DISKIN

Basketball 1, 2, 3, 4; Football 1, 3, 4; Track 1, 3, 4; Baseball 1; Lettermen 1, 2, 3, 4; F.F.A. 1, 2, Secretary 3, Vice-President 4; Chorus 2; Band 1, 2, 3, 4; Class President 4.

PATRICIA McCAULEY

Transferred from LCCHS; Pep Club 4; Speech 4; Dramatics 4; Pow Wow Staff 4; Chorus 4.



EDWARD BORN

Football 1, 2, 3, 4; Track 1, 3, 4; F.F.A. 1, 2, 3, 4; Chorus 1, 4; Lettermen Club 2, 3, 4.

CLARITA SMITH

Band 1, 2, 3, 4; Pep Club 1, 2, 3, 4; Student Council Rep. 1; Annual Staff 4; Speech 4; Dramatics 4; Junior Play.

JOLENE O'BRIEN

Band 1, 2, 3, 4; Twirler 2, 3; Chorus 1, 2, 3, 4; Pep Club 1, 2, 3, 4; Cheerleader 2, 3, 4; Basketball Queen 2; Football Queen 4; Pow Wow Staff 4; Sextet 4.





JUDITH ENSICH

Band 1, 2, 3, 4; Chorus 2, 4; Pep Club 4; Class Treasurer 4; Speech 4; Dramatics 4; Honor Society 3, 4; Junior Play; Girls' State 3. Valedictorian.



FRANCES PAULIE

Band 1, 2, 3, 4; Chorus 1, 2; Twirler 2, 3, 4; Pep Club 1, 2, 3, 4; Pow Wow Staff 4; Annual Staff 4.



HARRY WIATRAK

Basketball 1, 2, 3, 4; Football 2, 3; Baseball 1; Student Council Rep. 2; Lettermen Club 1, 2, 3, 4; Pow Wow Staff 4; Junior Play.

MARGARET BURKE

Band 1, 2, 3, 4; Class President 1; Class Secretary 4; Student Council Rep. 2; Annual Staff 4; Twirler 1, 4; Honor Society 3, 4; Junior Play.

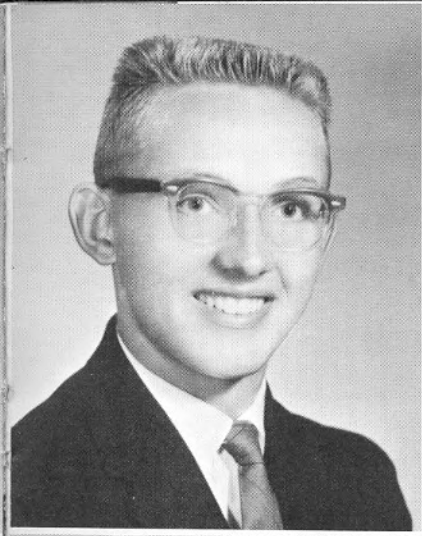


JAMES HOLDING

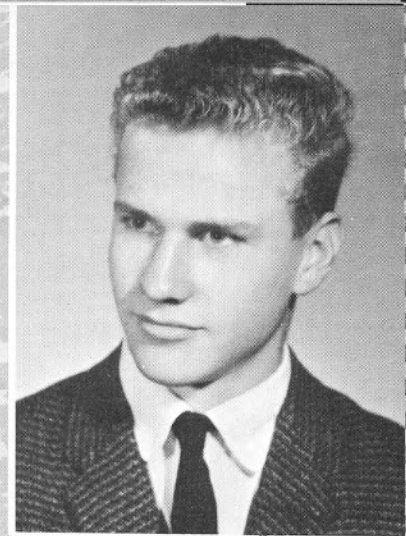
F.F.A. 1, 2, 3, 4; Chorus 2; Basketball 1, 2, 3, 4; Football 3, 4; Track 1, 2, 3; Pow Wow Staff 4; Lettermen Club 3, 4.



PARSONS
CLEARING
HOUSE



S
E
N
I
O
R
S

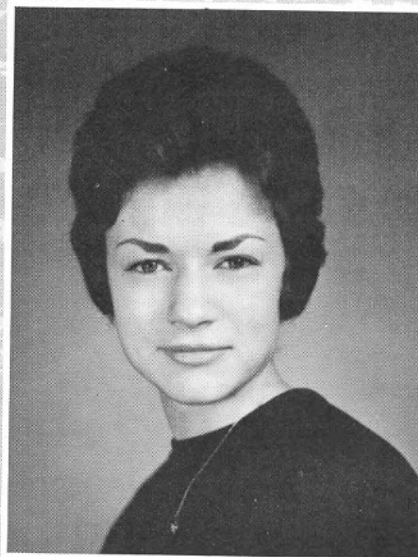


MICHAEL PAULIE

Basketball 1, 2, 3, 4; Football 4; Track 1, 2, 4; F.F.A. 1, 2; Chorus 2, 4; Band 2, 3, 4; Student Council Rep. 1, 3, Vice-President 4; Lettermen Club 1, 2, 3, 4; Boys' State 3; Junior Play.

JOHN SCHOENHOFER

Class Vice-President 1; Class Secretary 2; Football 2, 4; Track 1, 2, 3; F.F.A. 1, 2; Lettermen Club 1.



FELIX VAN LEEUWEN

Honor Society 4; Annual Staff 4; Junior Play. Co-Salutatorian.

CAROLYN KENNEDY

Band 1, 2, 3, 4; Chorus 1, 2, 3, 4; Pep Club 1, 2, 3, 4; Cheerleader 3, 4; Football Attendant 3, 4; Basketball Queen 3.

CHARLOTTE CARTER

Class Secretary 1; Band 1, 2, 3, 4; Pep Club 1, 2, 4; Basketball Attendant 3; Football Attendant 3; Pow Wow Staff 4; Annual Staff 4.

