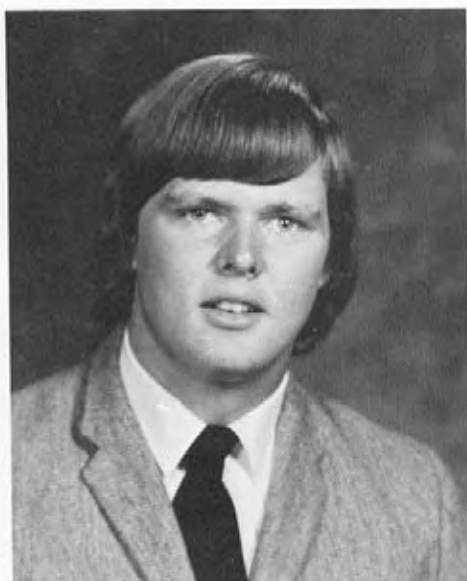




**BETTY JEAN O'BRIEN**  
 Pep Club 1, 2, 3, 4; Yearbook Staff  
 4; Paper Staff 4; Band 1, 2, 3, 4;  
 Chorus 3, 4; Volleyball 2, 3, 4;  
 National Honor Society 4.



**JIM BURKE**  
 Letterman's Club 1, 2, 3; Track 1;  
 Football 1, 2, 3, 4; Basketball 1, 2,  
 3, 4; Basketball Escort 4; Paper  
 Staff 4.



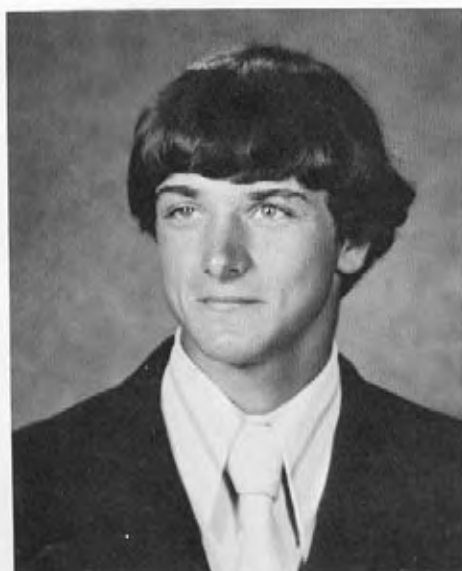
**BEVERLY BUTLER**  
 Pep Club 1, 2, 3, 4; Band 1, 2; Cho-  
 rus 1, 2, 3; Paper Staff 4; Student  
 Helper 3; Yearbook Editor 4.

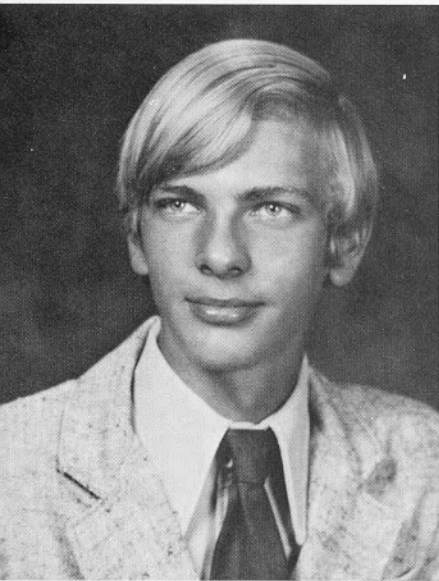
*Class Colors: Royal Purple And Orchid*

**MARK VAN LEEUWEN**  
 F.F.A. 1, 2, 3, 4; Basketball 1, 2,  
 3; Football 1, 2, 3, 4; Baseball 1, 2,  
 3; Letterman's Club 1, 2; Band 3;  
 Chorus 3.

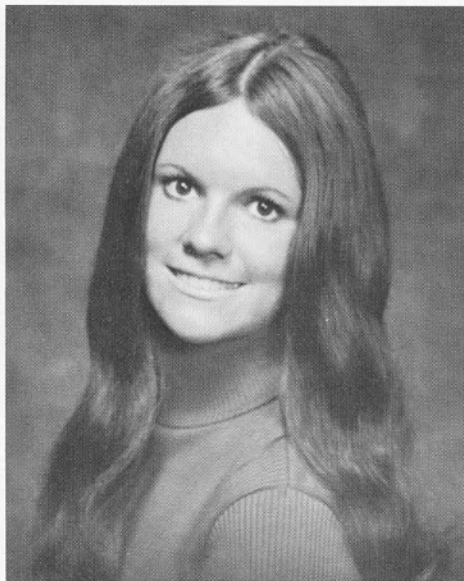
**TAMMIE MCKINZIE**  
 Pep Club 1, 2, 3; Gold Dusters 1, 2;  
 Student Council 2; Yearbook Staff  
 4; Volleyball 2, 3; Chorus 1, 2, 3, 4;  
 Class Secretary 1, 2, 3, 4; Paper  
 Staff 4; Student Helper 3.

**KENNY SHIVELY**  
 F.F.A. 1, 2, 3, 4; Reporter 3; Sec-  
 retary 4; Letterman's Club 3; Year-  
 book Staff 4; Track 1; Golf 3.

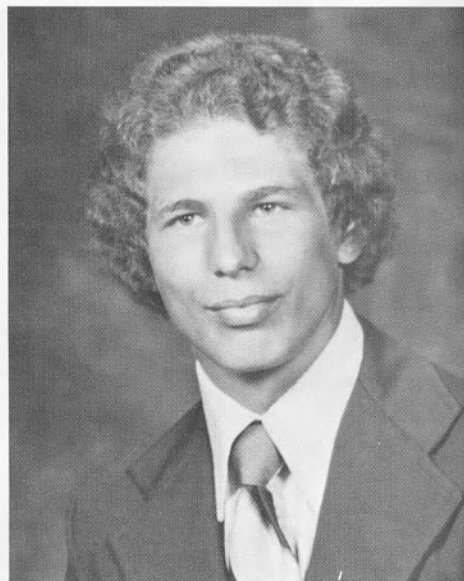




GLEN SCHOENHOFER  
F.F.A. 1, 2, 3, 4; Basketball Manager 4; Football Manager 2, 4; Baseball 3; Track 4; Class Treasurer 3; Yearbook Staff 4; Paper Staff 4.



MARGARET DULING  
Paper Staff 4; Pep Club 1, 2, 3, 4; Yearbook Staff 4; Chorus 1, 2, 3; Gold Dusters 1, 2; Band 3; F.F.A. Sweetheart 3; Miss Basketball 4.

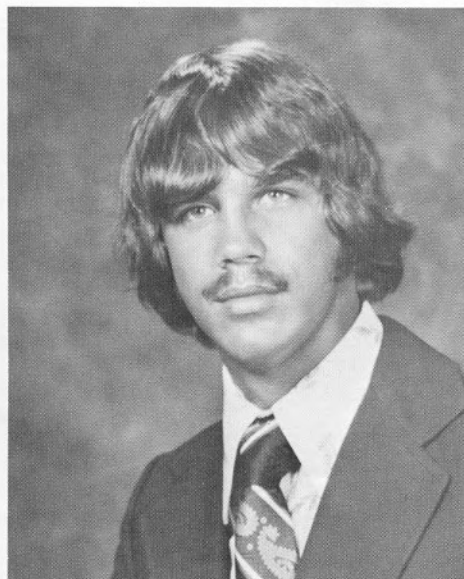


BOB BEACHNER  
Basketball 1, 2; F.F.A. 1, 2, 4; Letterman's Club 1, 2, 3, 4; Football 1, 2, 3, 4; Football Escort 4; Track 1; Paper Staff 4.

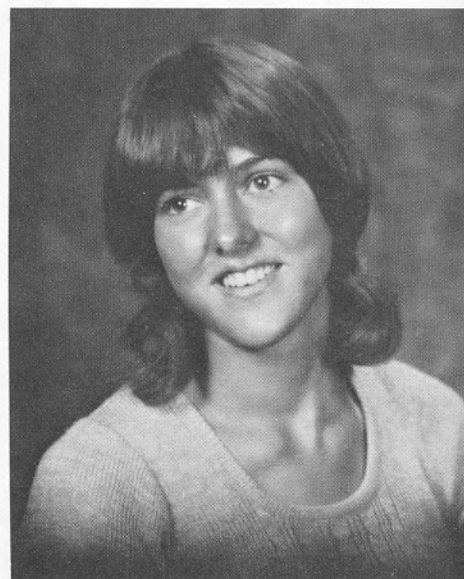
*Class Flower: Orchid*



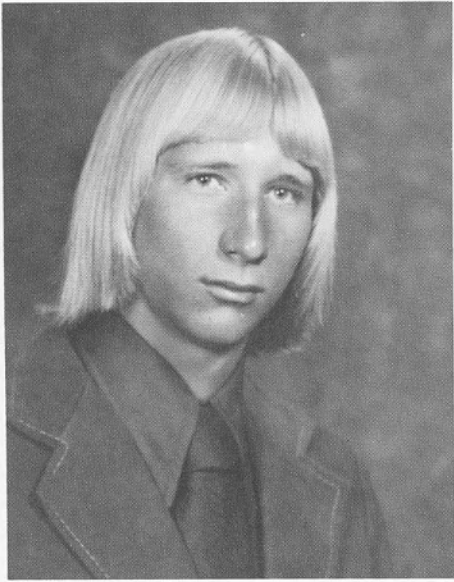
TERESA BOONE  
Pep Club 1, 2, 3, 4; Paper Staff 4; Yearbook 4; Track 4; Volleyball 2, 3, 4; P.E. Assistant 4; Chorus 1, 2, 3; Letterman's Club 3, 4.



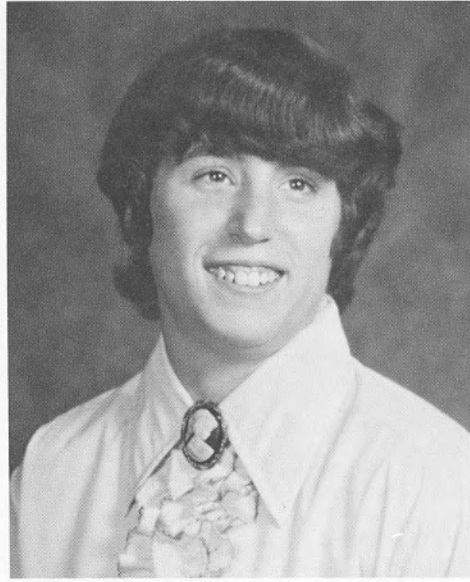
BRIAN SMITH  
Letterman's Club 1, 2, 3, 4; Track 1; Basketball 2; Football 1, 2, 3, 4; Class Vice President 1; Golf 1, 2, 3, 4; Golf Regional Medalist 2, 3, 4; Golf State Runner-up 4.



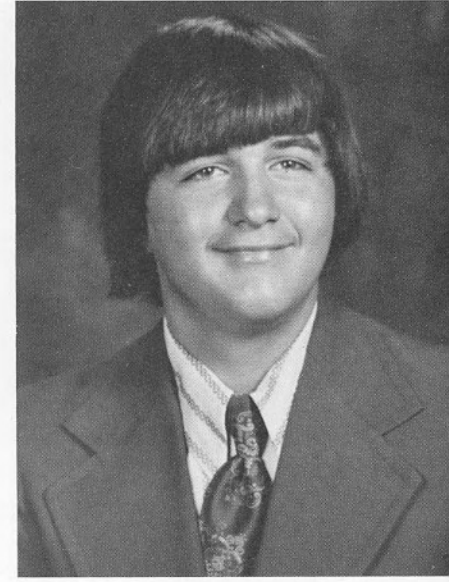
JANET BROWN  
Yearbook Staff 4; Pep Club 1, 2, 3, 4; Pep Club Officer 4; Paper Staff 4; Track 4; Volleyball 2, 3, 4; Chorus 1; Letterman's Club 3, 4; Miss Pep Club 4.



STEVE FORST  
F.F.A. 2, 3, 4; Paper Staff 4.



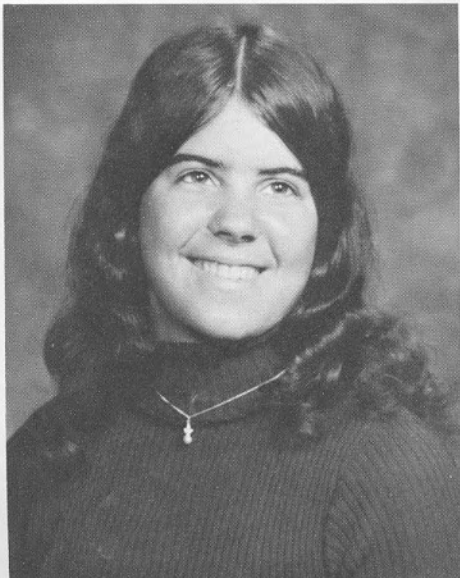
SUSAN LYNCH  
Pep Club 1, 2, 3, 4; Yearbook Staff  
4; Chorus 2, 3; Paper Staff 4; Stu-  
dent Helper 3, 4.



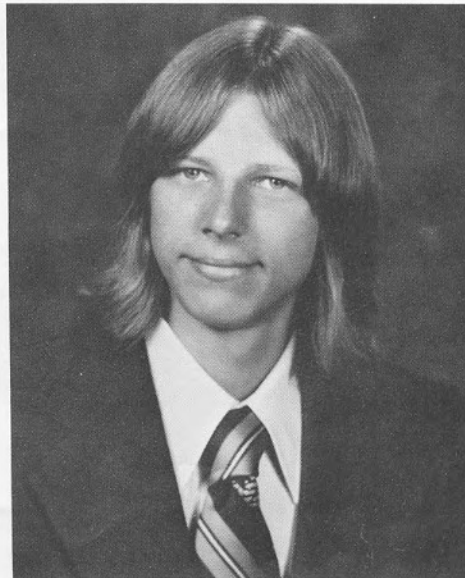
PAUL WESTHOFF  
F.F.A. 1, 2, 3, 4; Paper Staff 4;  
Vo-Ag Mechanics Award 3.

*Class Motto: Today We Follow; Tomorrow We Lead.*

MARY COOMES  
Pep Club 1; Gold Dusters 2; Year-  
book Staff 4; Paper Staff 4; Chorus  
2, 3; Student Helper 3.



MARK KENNEDY  
Basketball 2; Paper Staff 4; Gen-  
eral Music 4.



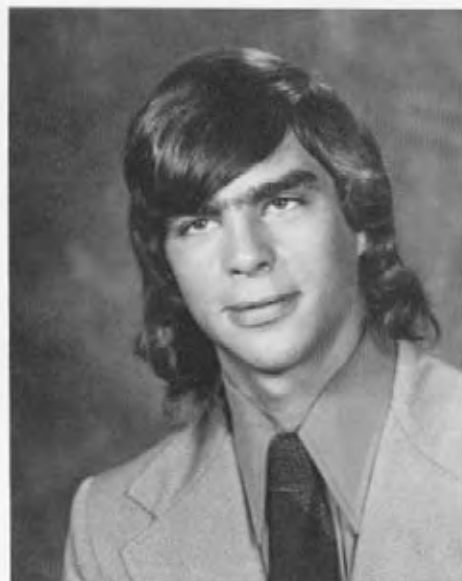
SARA WARD  
Pep Club 1; Gold Dusters 2; Chorus  
2, 3; Yearbook Staff 4; Paper Staff  
4; Student Helper 3.





MARY HOFER

Pep Club 1, 2, 3, 4; Cheerleader 3, 4; Gold Dusters 1, 2; Chorus 1, 2, 3, 4; Band 1, 2, 3; Majorette 2; Yearbook Staff 4; Paper Staff 4; National Honor Society 3, 4; Who's Who in America 4; Miss Senior 4.



STEVE SCHOENHOFER

F.F.A. 1, 2; Letterman's Club 2, 3; Basketball 1, 2, 3, 4; Football 1; Baseball 1; Chorus 3.



PATTY BROGAN

Pep Club 1, 2, 3, 4; Pep Club Officer 2; Cheerleader 1, 3, 4; Gold Dusters 2; Student Council 4; Yearbook Staff 4; Paper Staff 4; Volleyball Manager 4; Class Treasurer 1; Class President 2, 3, 4; Chorus 1, 2, 3, 4; Miss Music 4; National Honor Society 3, 4.

*Valedictorian: Mary Hofer     Salutatorian: Linda Van Leeuwen*

DAVE GRILLOT

F.F.A. 1, 2; Letterman's Club 2; Golf 1, 2; Band 1, 2, 3, 4; Chorus 3, 4.

LORETTA WESTHOFF MADL

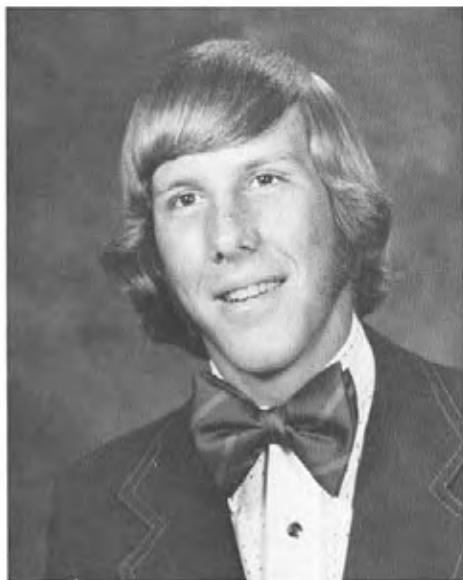
Pep Club 2; Chorus 1, 2, 3.

GERARD MOSES

F.F.A. 1.







ROBERT DISKIN

Student Council 1, 2, 4; Student Council Vice President 4; Letterman's Club 1, 2, 3, 4; F.F.A. 1; Yearbook Staff 4; Paper Staff 4; Basketball 1, 2, 3; Football 2; Baseball 1; Golf 2, 3, 4; State Golf Runner-up 4; Band 1, 3; Chorus 3; Miss Music Escort 3.

Not Pictured  
TOM LINDSAY  
Letterman's Club 1, 2, 3; Basketball 1, 2, 3; Football 1, 2, 3, 4; All Conference Football 3, 4; Baseball 2, 3; Track 1, 2; Band 3; Chorus 3.

TOM ENSCH  
F.F.A. 1, 2; Paper Staff 4; Basketball 1; Football 1, 3; Golf 3.

ED DHOOCHE  
F.F.A. 1, 2, 3, 4; Paper Staff 4.



LINDA VAN LEEUWEN

Student Council 3; Pep Club 1, 2, 3, 4; Cheerleader 1, 2, 3, 4; Yearbook Staff 4; Paper Staff 4; Class Vice President 3, 4; Chorus 2, 3; Betty Crocker Award 4; Miss Football 4; National Honor Society 4.

*Class Sponsors: Mr. Hancks And Mr. Harris*

CINDY CRAGER

Pep Club 1, 2, 3; Cheerleader 1, 2, 3; Chorus 2, 3; Yearbook Staff 4; Paper Staff 4; Class Treasurer 2; National Honor Society 4.

DON SMITH

Student Council President 4; F.F.A. 1, 2, 3, 4; F.F.A. Reporter 2, 4; Letterman's Club 1, 2, 3, 4; Basketball 1, 2, 3, 4; Football 1, 2, 3, 4; Baseball 1; Track 1; Golf 2, 3; Band 1; Paper Staff 4; Class President 1; National Honor Society 3, 4; Miss Music Escort 4.

**\$10 GIRARD PATRONS \$10**

MARKLEY IMPLEMENT INC.

NELSON INSURANCE & REAL ESTATE  
AGENCY

DZIADULA'S FEED & FARM SUPPLY

